



MINISTRY OF
HEALTH

MANATŪ HAUORA

Disability Support Services

Introducing the New Model for supporting disabled people



15 March 2011

Who we are

Jenny Moor – Development Manager. Disability Support Services, Ministry of Health (Programme Leader)

Anne O'Connell – Group Manager. Disability Support Services, Ministry of Health (Programme Sponsor)

and other Ministry staff involved in aspects of the work

Ruth Gerzon & Lawrence Chok – Inclusion Aotearoa

Why do we need a new way?

Disabled people want

a good life and

more choice and control
over support they receive



In 2006 MPs set up a Select Committee to talk to disabled people, families and service providers

Ministry of Health meetings with consumers highlight need for – flexibility, support for families, workforce and access to information – DSS strategic plan and work programme formed from this

The Committee's report is given to Parliament

Ministry of Health research good practices here and overseas, including Local Area Coordination

New Model for supporting disabled people developed

What is different about the new model?

OLD WAY

Someone else
makes decisions
about what support
you get and when
you get it

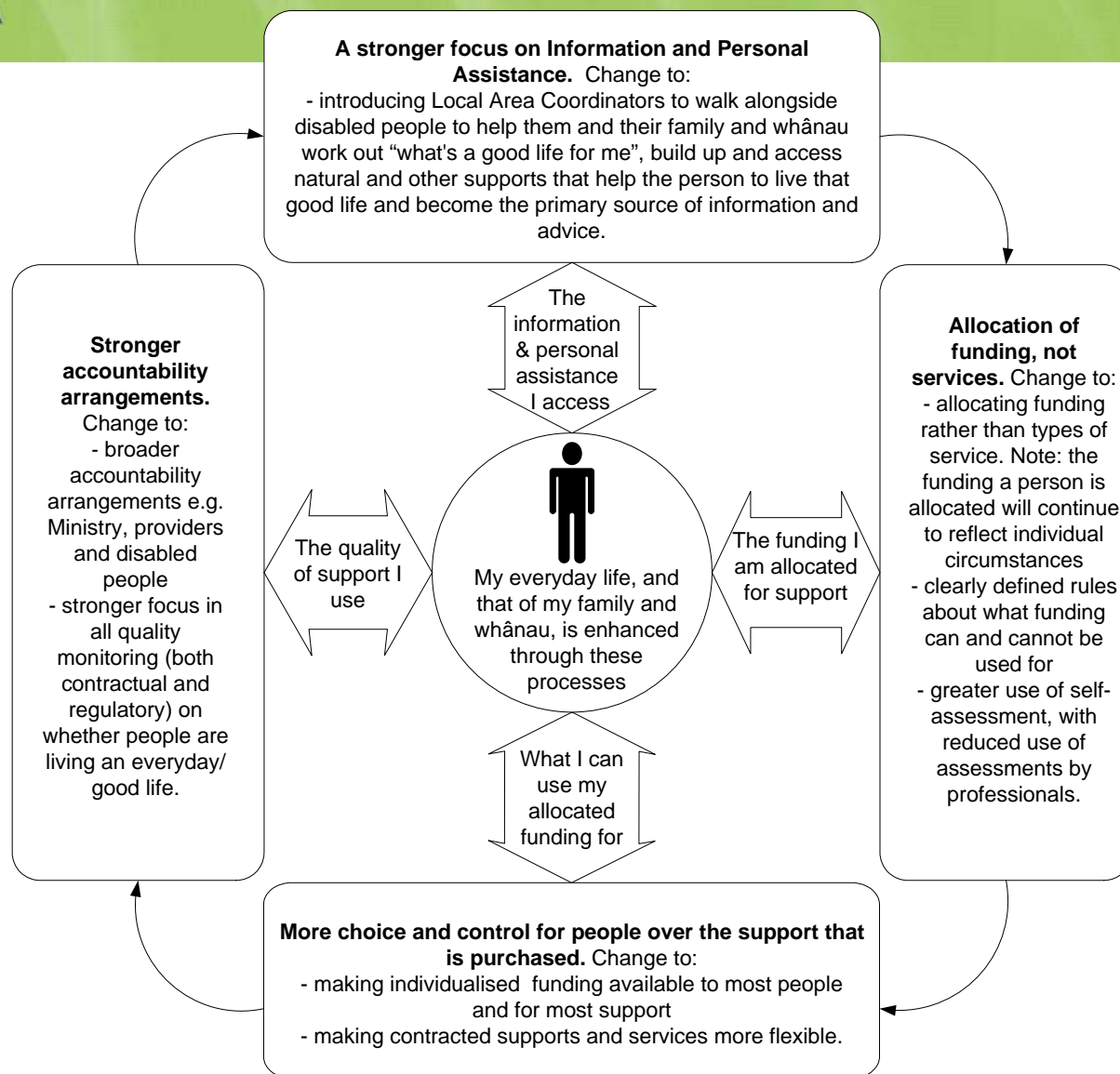
NEW WAY

With support,
you decide
what's important
to you to have a
good life

Disability Support Services

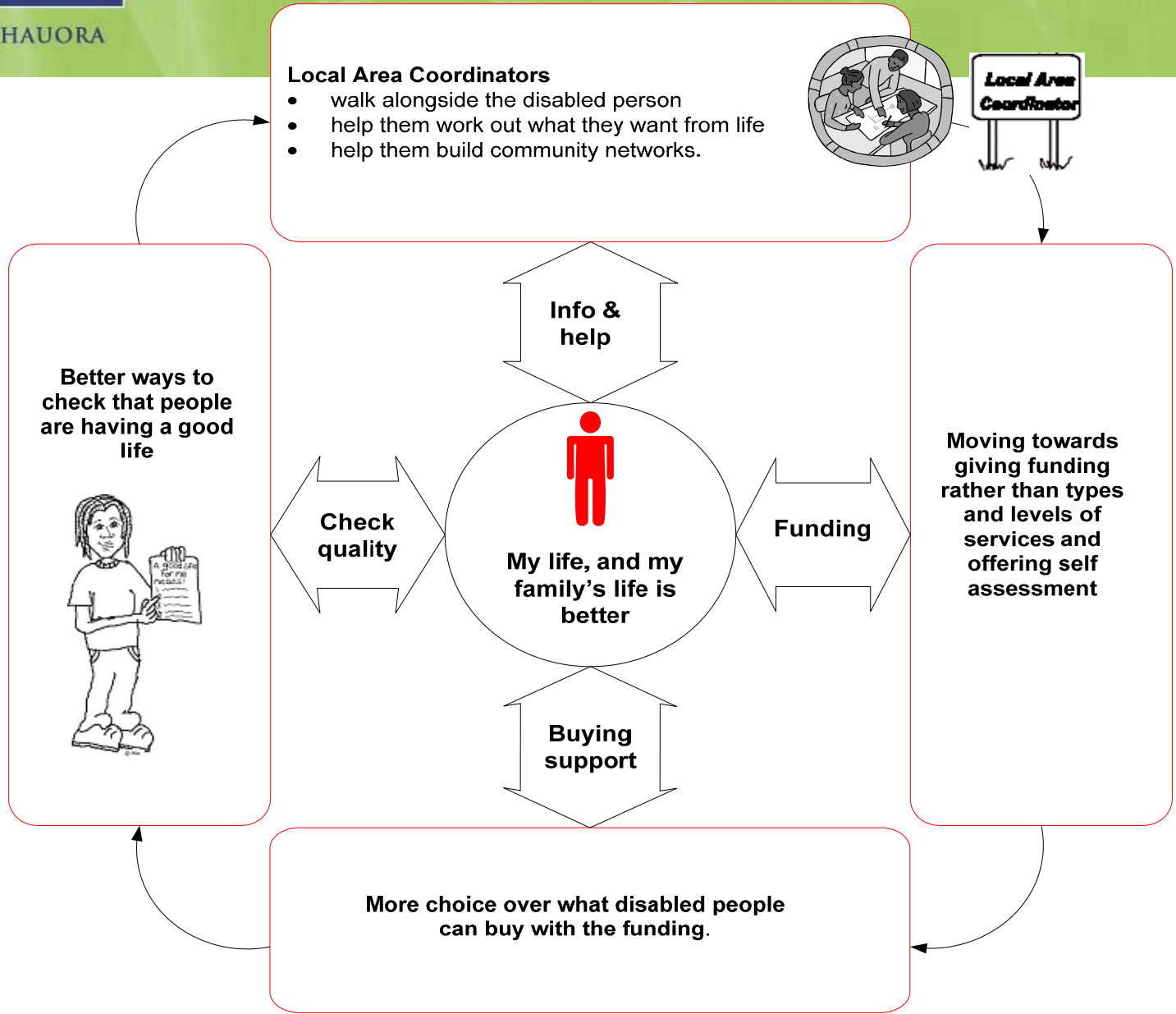
The New Model

This is the model
Cabinet approved



Disability Support Services

**The
New
Model -**
another
version in
plain
language



Local Area Coordination

The most visible part of the new model in the demonstration will be
Local Area Coordination

How does Local Area Coordination work?

A local area coordinator (LAC) will help you :

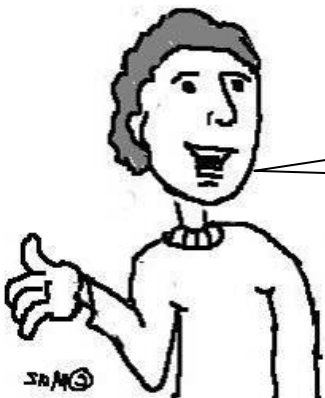
- get information
- work out how you want to live
- build relationships with people and organisations in your community or town
- work with the community to encourage them to include disabled people



What else is the new model about?

Funding, not services – allocate dollar value rather than type of service, self assessment

What you can use the funding for – expanding IF, increasing flexibility



**OK for me,
but does it
work for you
too?**



Accountability – for everyone – Ministry, providers, service users, focus on quality and having a good life

What is Individualised Funding?

Individualised Funding (IF) is a way of paying for support services

What can you do with IF?

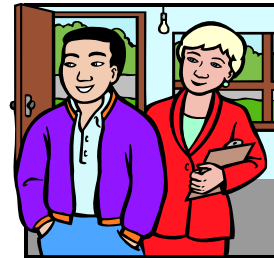
You can choose:

who comes into your home

when they come

what they do

how much they get paid (provided it's at least the minimum wage)



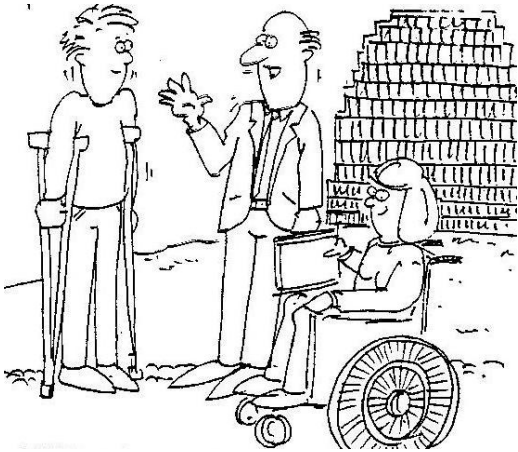
Demonstrating the New Model



Western Bay of Plenty/Tauranga has been chosen as the first place to test out some elements of the New Model

Inclusion Aotearoa are supporting the Ministry of Health with this Demonstration project

Community Engagement



We want to work closely with the community to share ideas, and to refine and evaluate the model

Inclusion Aotearoa has set up a local working group to work with them and the Ministry of Health to decide what will work here

A National Reference group is being set up as a strategic forum for development of the New Model and its demonstration



For further information:

Inclusion Aotearoa

Web site: <http://inclusionaotearoa.co.nz>

Phone: (07) 3124191

Email: inclusionaotearoa@gmail.co.nz

or write to P O Box 3017, Ohope, Whakatane

Ministry of Health Disability Support Services

New Model project page:

<http://www.moh.govt.nz/moh.nsf/indexmh/disability-keyprojects-model>